

# Cambridge Area Gypsy and Traveller Accommodation Needs Assessment (GTANA) 2011: Methodology

## Contents

Introduction: Objectives of the Cambridge area GTANA 2011 .....	2
Rationale for general approach.....	2
Methodology: overview .....	3
Gypsy and Traveller Permanent Site Pitch Assessment .....	3
Transit Provision.....	5
Travelling Showpeople Permanent Site Pitch Assessment .....	6
Recommendation.....	6
Detail.....	7
Appendix 1: flowchart of top level stages and stage numbers in methodology	8
(A) Permanent Site Pitch Assessment: Gypsies and Travellers .....	9
(B) Transit site pitch assessment: Gypsies and Travellers.....	14
(C) Travelling Showpeople pitch assessment.....	15
Appendix 2: Methodology in detail .....	<b>Error! Bookmark not defined.</b>
Permanent pitch and caravan needs assessment: Gypsies and Travellers (2011).....	<b>Error! Bookmark not defined.</b>
Transit site pitch and caravan needs assessment: Gypsies and Travellers .....	<b>Error! Bookmark not defined.</b>
Appendix 3: Travelling Showpeople methodology in detail ...	<b>Error! Bookmark not defined.</b>
Main pitch and caravan needs assessment - Travelling Showpeople (2011) .....	<b>Error! Bookmark not defined.</b>
List of abbreviations .....	21

## Note:

**Not to be reproduced in any format without prior permission**

## **Introduction: Objectives of the Cambridge area GTANA 2011**

To assess the accommodation needs of *local* Gypsies and Travellers and Travelling Showpeople in terms of permanent and temporary pitches for the years up to 2016 and to provide indicative figures for the ten years beyond that date.

The assessment provides figures for the required numbers of:

- permanent pitches 2011 to 2016
- temporary pitches 2011 to 2016
- the relative proportions of social rented to privately owned pitches

and indicative figures for the required numbers of:

- permanent pitches 2016 to 2021
- temporary pitches 2016 to 2021

The assessment covers the following nine local authorities:

- Cambridge City
- East Cambridgeshire
- Fenland
- Forest Heath
- Huntingdonshire
- South Cambridgeshire
- St Edmundsbury
- King's Lynn and West Norfolk
- Peterborough

The first seven local authorities are located in the Cambridge housing sub-region. King's Lynn & West Norfolk and Peterborough are adjacent local authorities with strong Gypsy and Traveller connections with the Cambridge housing sub-region.

### **Rationale for general approach**

The assessment is of local needs. As the local need is substantially already present in the local authority areas, the assessment is based on the existing population with a baseline of January 2010. That is, any in-migration after 2010 will not be considered as local need with the exception of a very small number of returning families with a clear previous local connection.

The modeling currently assumes that in-migration after the 2010 baseline does not constitute local need other than for a very small number of returning families. This will be dealt with by not increasing the number of unauthorized caravans used in future years, even though the caravan counts may indicate

an increase. The local need shown by current unauthorized caravans should decrease over time as the backlog is dealt with.

*Local need* is defined as:

- Families on permanent pitches in the local authority area, either authorised or tolerated unauthorized.
- Natural growth: new family formation by young people from the existing families.
- Families wishing to move out of houses in the relevant local authority area.
- Families returning to the local authority area who have a clear previous *local connection* such as having moved away from the local authority area and wishing to return to look after an elderly relative.

As a matter of providing a practical basis for planning, unauthorised caravans present in each local authority area at the baseline of 2010 will be considered for provision of permanent pitches, either through private provision through receipt of planning applications or through local authority or RSL provision.

It is necessary to set a base date to take account of the possibility of in-migration by Travellers who may not be local to the local authority, just as base dates are used in demographic models of the general population. The baseline of January 2010 is taken as the cut off for identifying the number of caravans already present in the local authority area.

## **Methodology: overview**

The model has been developed working with relevant staff in the local authority areas, including Travellers Liaison Officers (TLO), housing and planning officers. The model assesses *local need* in each local authority area. An overview is presented in this section.

### ***Gypsy and Traveller Permanent Site Pitch Assessment***

#### **Current unmet need: baseline January 2010**

- The model takes an average caravan count over the previous 4 counts for *unauthorised caravans*, adjusted down to take account of the assertion that the Department of Communities and Local Government (CLG) Caravan Counts are artificially high in January and July due to seasonal movement (source: TLOs). That provides a base figure of *unmet need*.
- Add to that are pitches based on the number of Gypsies and Travellers who wish to move out of houses (net of those who wish to move into houses).

#### **Immediate future need, 2011 to 2016**

- *Natural growth* is calculated based on the average number of young Gypsy and Travellers at Key Stage 4 (young people aged 14 to 16), irrespective of school attendance, for the years 2007 to 2009. Divide

this by 3 to give the number of young people aged 16 per year and therefore the size of the cohort of young people of family forming age. Halve the figures to allow for forming couples and adjust for some not forming families. Further adjust the family formation figures to allow for some moving into houses.

- An estimation is made of the number of *families with a strong and identifiable local connection* who need to return to the local authority area. An example might be a family returning to look after an elderly relative who has lived in the local authority area for many years.
- The total of natural growth plus returning families with a local connection is calculated.
- CLG's Strategic Housing Market Assessment guidance<sup>1</sup> approach is applied to deal with the backlog from Current Unmet Need over a specified length of time, initially 5 years by summing the annual Current Unmet Need and annual Immediate Future need.

### Longer term need, 2016 to 2021 and beyond

- Initially natural growth based on the number of children and young people in Key Stage 3 (children and young people aged 11 to 14) irrespective of school attendance, for the years 2007 to 2009. Divide this by 3 to give the number of young people aged 14 per year and therefore the size of the cohort of young people of family forming age for the slightly longer term.
- The population model will be developed through time using primary and secondary education based on current data each year and bringing in other population factors such as mortality rates if possible. This is the proposed population model to provide a long term basis for Gypsy and Traveller accommodation needs.

### Tenure split: social rented versus private provision

Two sets of figures are produced for tenure split, looking at permanent provision for Gypsies and Travellers:

- The tenure split to deal with the overall backlog of need in existing unauthorized caravans which are not tolerated.
- The tenure split to deal with the annual need arising for pitches, including dealing with the backlog.

In more detail:

The **backlog of need**. The model calculates the ratio of the current provision of social rented to private caravans in each local authority area and applies this ratio to the current unmet need. The rationale for this is that Gypsies and Travellers who based in the local authority on unauthorized sites will have a broadly similar economic profile because of having similar local opportunities for work, land values and so on. This is a single figure, not annualized. The

<sup>1</sup> <http://www.communities.gov.uk/publications/planningandbuilding/strategichousingmarket>

assessment is made on current affordability now, not on future economic and educational opportunities, therefore differing access to education between those on authorized and unauthorized sites is not relevant.

The **annual need, including the backlog**. For this a minimum and maximum figure of need for social rented and of private provision is given. These are calculated from the total annual immediate future need. The annual minimum and maximum are produced by applying two approaches. One is the ratio of the current provision of social rented to private caravans as with the backlog of need tenure split. The other is based on local surveys from East Cambridgeshire in 2007<sup>2</sup> and King's Lynn and West Norfolk in 2009 which provide information on what proportion of Gypsies and Travellers could afford to provide their own site.

## Comparison

Compare the number of pitches/caravans with average planning approvals for the previous 10 years adjusted for large site approvals that dealt with a backlog of need and which are unlikely to be repeated ((this is an example of what will need to be discussed individually with districts – what is likely/unlikely to be repeated). Planning approvals indicate a view on what is likely to be approved under 'local need' and this can be compared with the number estimated by the natural growth population model approach based on young people of family-forming age. This is a qualitative exercise which does not itself form part of the model but will help to give a contextual view of the situation. It will be included in the reports for each local authority area rather than part of the model.

## Transit Provision

Firstly, five figures are provided:

- Existing transit sites provided by local authorities or RSLs: caravan counts.
- Existing transit sites provided by local authorities or RSLs: Figures provided by local authorities directly.
- Proportion of current population who would require transit sites for 'events' (King's Lynn and West Norfolk survey 2009 based).
- Average number or largest single roadside encampments over previous year.
- Comparator: EERA<sup>3</sup> estimates 2008.

Secondly, a qualitative assessment is made and a final figure given. Initially this is based on the average number of roadside encampments or the largest actual number of caravans in a single encampment in a local authority area, depending on what local data is available. Outliers of very large encampments which are a rare occurrence and cannot be planned for are excluded.

---

<sup>2</sup>

[http://www.eastcambs.gov.uk/sites/default/files/ldf/sub\\_district\\_gypsy\\_and\\_traveller\\_accommodation\\_ass\\_22611.pdf](http://www.eastcambs.gov.uk/sites/default/files/ldf/sub_district_gypsy_and_traveller_accommodation_ass_22611.pdf)

<sup>3</sup> See Glossary (page 22)

The final figures for transit position will need to be finessed using local knowledge in the local authorities. The figures will show a real need in each local authority area, but as this is for transit places and major travelling routes cut through all parts of the study area, it is likely that a transit site provided in one local authority area will serve neighbouring areas.

### ***Travelling Showpeople Permanent Site Pitch Assessment***

The approach is repeated in an edited version for Travelling Showpeople. The essential data such as numbers of pitches, caravans and children and young people should be sufficient to provide a realistic assessment of *local need*. The modeling for this group is broadly similar to modeling in other Travelling Showpeople needs assessments, although the data used in their assessments tends to be from survey work rather than existing data sources<sup>4</sup>. There is less information relating to Travelling Showpeople than to Gypsies and Travellers for local authorities in the Cambridge area. This appears to be for two reasons: firstly most districts either have no resident or 'overwintering' Travelling Showpeople (e.g. Huntingdonshire) or very few (e.g. 4 pitches in total in King's Lynn and West Norfolk). Secondly, the local population of Travelling Showpeople appear to meet their own needs very successfully. This second suggestion will need to be verified in case there is a hidden need which is not being met.

The Travelling Showpeople assessment does not apply to all local authorities as Travelling Showpeople are only present in any number in some areas and completely absent from others. There would be some benefits to producing a single assessment for the entire area covered by the nine participating local authorities; or assessments for Cambridgeshire and some other larger areas; rather than nine separate assessments.

The East of England Plan gave figures for

- Cambridgeshire and Peterborough ('East Cambridgeshire and elsewhere')
- Suffolk ('Suffolk Coastal and elsewhere') and
- Norfolk.

## **Recommendation**

To carry out follow-up work which may be qualitative or may involve a local survey of Travelling Showpeople. There are two reasons for this recommendation:

- The Showmen's Guild strongly recommend a separate assessment for Travelling Showpeople and raise concerns over assessments being tagged on to the general GTANA

---

<sup>4</sup> Such as:

[http://www.rushmoor.gov.uk/media/adobepdf/h/c/Travelling\\_Showpeople\\_Accommodation\\_Assessment\\_2008.pdf](http://www.rushmoor.gov.uk/media/adobepdf/h/c/Travelling_Showpeople_Accommodation_Assessment_2008.pdf)

<http://www.whitehorsedc.gov.uk/website/download.asp?fn=%2FImages%2FNeeds%2520Assessment%2520for%2520Travelling%2520Showpeople%2520Final%25203%2D10%2D08%5Ftcm4%2D7737%2Epdf>.

- Local Authorities do not have the comparatively detailed information that they do about Gypsies and Travellers. The follow-up work would fill this gap, such as testing whether local Travelling Showpeople do meet their own needs.

The assessment as it stands provides an initial assessment, but further information is needed to develop that over time. This is especially so to develop a population model for Travelling Showpeople in line with the development of the Gypsy and Traveller population model.

## **Detail**

Appendix 1 sets out a flowchart, and the stages involved in each stage.

Appendix 2 sets out the methodology including assumptions in more detail for permanent and transit need.

Appendix 3 sets out methodology including assumptions in more detail for Travelling Showpeople need.

In all, sub totals are shown highlighted in yellow and final totals in green.

## **Appendix 1: flowchart of top level stages and stage numbers in methodology**

(A) Permanent Site Pitch Assessment: Gypsies and Travellers

Stage 1: Assess main pitch and caravan current local need

Stage 2: Near future need 2011 to 2016

Stage 3: Mid and longer term future local need (2016 to 2021)

Stage 4: Pitches per year

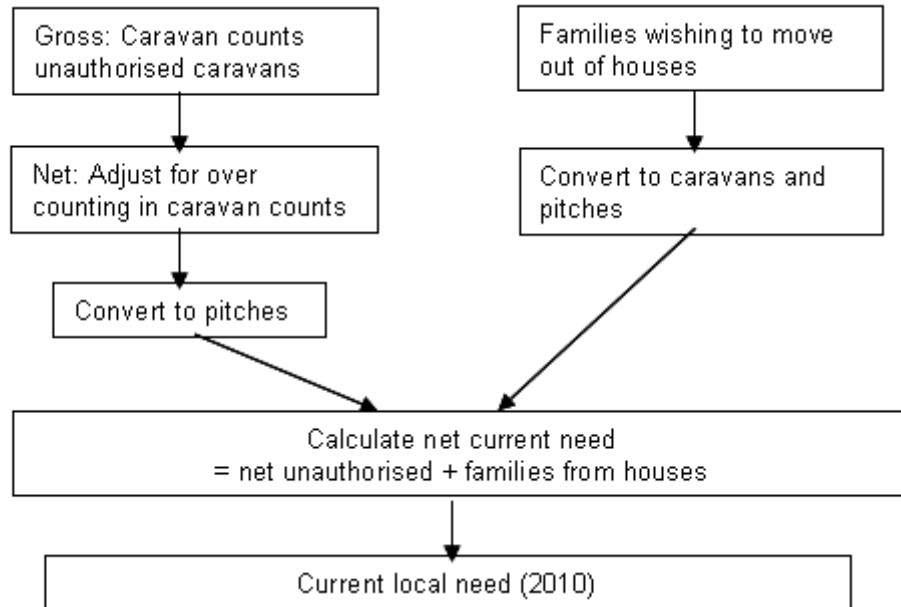
Stage 5: Tenure split for pitches

(B) Transit site pitch and caravan needs assessment: Gypsies and Travellers

(C) Permanent Site Pitch Assessment: Travelling Showpeople

**(A) Permanent Site Pitch Assessment: Gypsies and Travellers**

**Assess current local need**

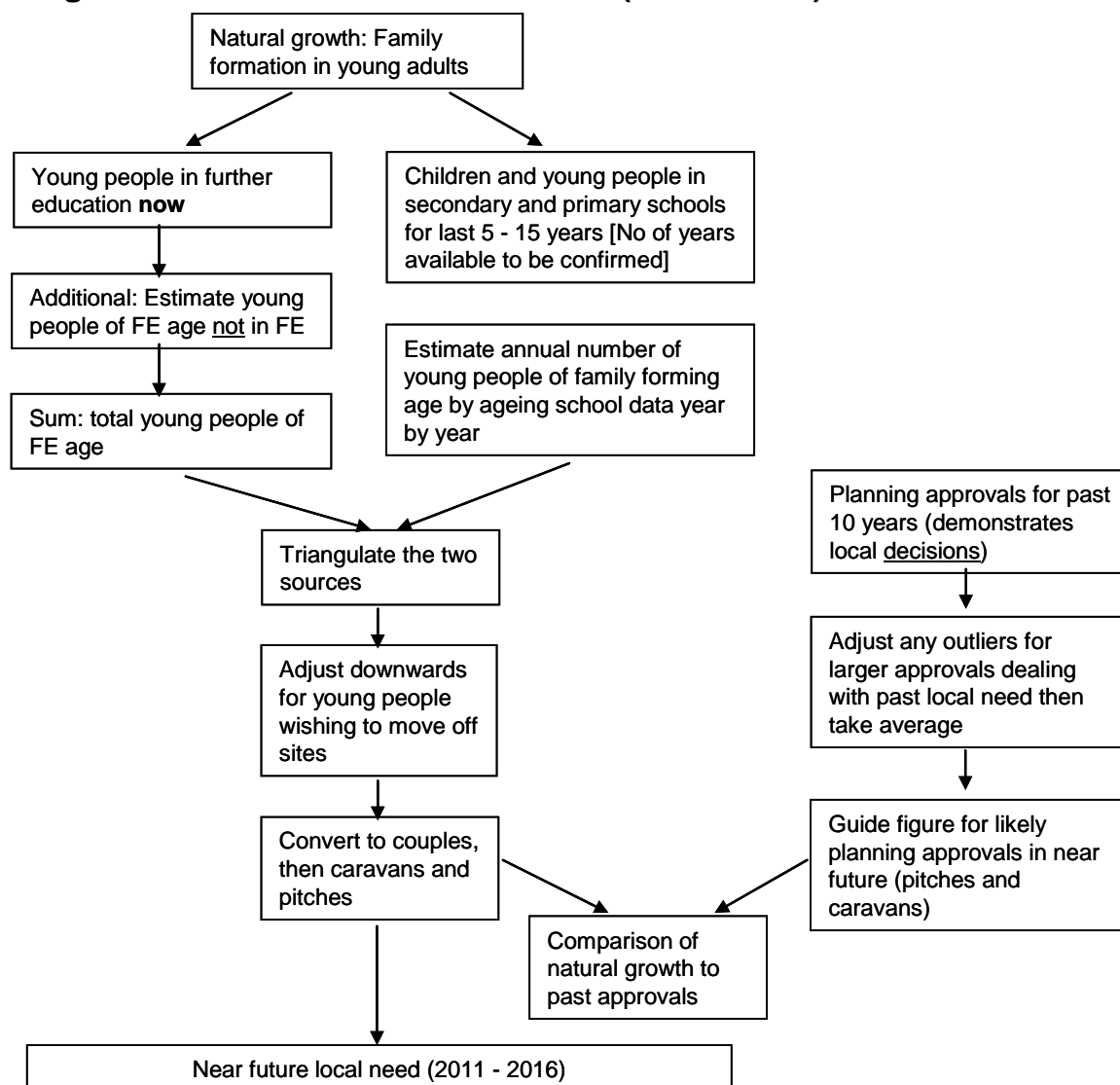


**Stage numbers in methodology**

<b>Step 1a : Current need (backlog : caravan counts)</b>	
1a.1	Supply : caravan counts excluding unauthorised not tolerated
1a.2	Base : average caravan counts unauthorised
1a.3	Adjustment of unauthorised caravan counts for local need only
1a.4	Net need : average unauthorised caravans (local need)
1a.5	Conversion to number of pitches
<b>Step 1b : Current need (backlog : people based) in addition to caravans</b>	
1b.1	Traveller families based on caravan counts (base for number wanting to move into houses and freeing pitches)
1b.2	Traveller families expressing an interest in moving off sites into houses
1b.3	Traveller families likely to move off sites into houses
1b.4	Traveller families wishing to move out of houses onto sites (gross figure)
1b.5	Adjustment for Travellers only registering once a pitch becomes available
1b.6	Net figure Traveller families wishing to move from <b>houses to sites</b>
1b.7	Net figure Traveller families wishing to move from <b>sites to houses</b>
1b.7	Conversion to number of caravan
1b.8	Conversion to number of pitches
<b>Step 1c : Current need calculation (backlog)</b>	
1c.1	Current need caravans
1c.2	Current need pitches

Please see Appendix 2 for more detail

## Stage 2: Asses near future local need (2011to2016)



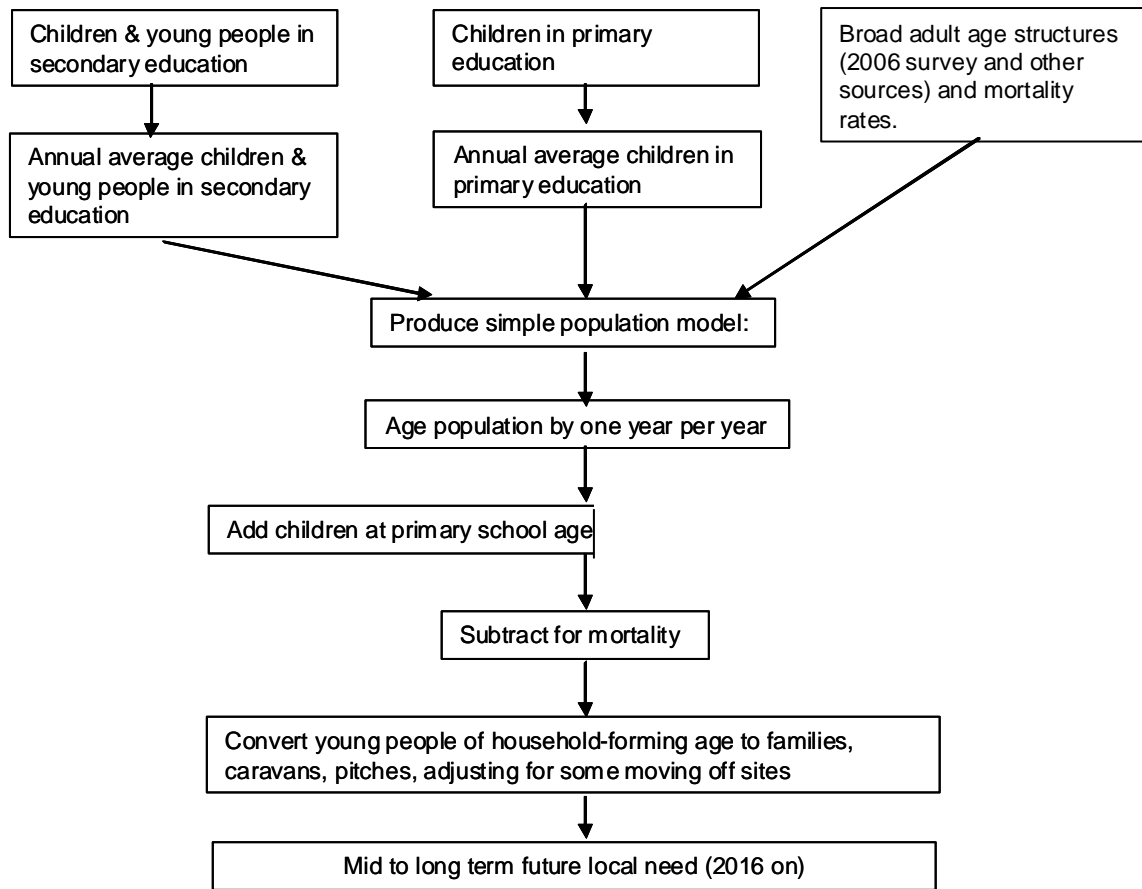
### Stage numbers in methodology

<b>Step 2a : 2011 to 2016 family, pitch and caravan calculation</b>	
2a.1	Young people of 'family forming age' Annual
2a.2	Additional multiplier for South Cambridgeshire and City (to apportion Travellers Education Service (TES) figures)
2a.3	Number of potential couples
2a.4	Family formation per year : calculation on young people of family forming age (Important : see notes)
2a.5	Adjustment for number of newly forming families wishing to move into houses
2a.6	Newly forming households (family formation per year wanting a pitch)
2a.7	Conversion to number of caravan (family formation) annual
2a.8	Conversion to number of pitches (family formation) annual
<b>Step 2b : families returning to local authority area with a 'local connection'</b>	
2b.1	Returning families with a 'local connection' : annual number of caravans
2b.2	For information: Conversion to number of families (local connection) : annual
2b.3	Conversion to number of pitches (local connection) : annual
2b.4	Number of caravans (local connection) : annual 2011 to 2016
2b.5	Number of pitches (local connection) : annual 2011 to 2016

	<b>Step 2c : Future need per year 2011 to 2016</b>
2c.1	Near future need caravans : annual 2011 to 2016
2c.2	Near future need pitches : annual 2011 to 2016
	<b>Step 2d : comparison figures natural growth (above) to past planning approvals</b>
2d.1	Existing temporary permissions (pitches)
2d.2	Temporary permissions : proportion need converting to permanent per year (pitches)
2d.3	Permanent planning permissions granted per year (pitches)
2d.4	Permanent planning permissions granted per year : adjusted for outliers (pitches)

Please see Appendix 2 for more detail

### Stage 3: Assess mid and longer term future local need, 2016to2021



**Notes:**

- The references to children in primary education and mortality are not used in the initial model as that would be superfluous. They are to be used in future updates as the population model develops.
- The number of all known young people will be included, irrespective of their school attendance.

**Stage numbers in methodology**

<b>Step 3a : newly forming households</b>	
3a.1	Young people of 'family forming age' Annual
3a.2	Additional multiplier for South Cambridgeshire and City (to apportion TES figures)
3a.3	Number of potential couples
3a.4	Family formation per year : adjust for a small number of young people of family forming age not forming a family
3a.5	Adjustment for number of newly forming families wishing to move into houses
3a.6	Newly forming households (family formation per year wanting a pitch)
3a.7	Conversion to number of caravan (family formation) annual
3a.8	Conversion to number of pitches (family formation) annual
<b>Step 3b : families returning to local authority area with a 'local connection'</b>	
3b.1	Returning families with a 'local connection' : annual number of caravans
3b.2	For information: Conversion to number of families (local connection) : annual
3b.3	Conversion to number of pitches (local connection) : annual
3b.4	Number of caravans (local connection) : annual 2016 to 2021
3b.5	Number of pitches (local connection) : annual 2016 to 2021

Please see Appendix 2 for more detail

## Stage 4: Pitches per year

### Stage numbers in methodology

	<b>Step 4a : Pitches per year 2011 to 2016</b>
4a.1	Base : current need 2010
4a.2	Adjustment : current backlog dealt with over time
4a.3	Average annual provision to meet current backlog need over agreed period
4a.4	Annual need 2011 to 2016 (newly forming households and returning Gypsies and Travellers with local connection)
4a.5	<b>Total Annual Need 2011 to 2016</b>
	<b>Step 4b : Pitches per year 2016 to 2021</b>
4b.1	Future need 2016 to 2021 (newly forming households)
4b.2	Future need 2016 to 2021 (returning families with a 'local connection')
4b.3	<b>Long term need per year</b>

## Stage 5: Tenure split: PITCHES

### Stage numbers in methodology

	<b>5a : current need 2010</b>
5a.1	Pitches on proportion current population on local authority/RSL sites
5a.2	Pitches on proportion current population on private sites
	<b>5b : future need 2011 to 2016</b>
5b.1	For guidance only: suggested <b>minimum</b> number pitches per year requiring local authority/RSL sites
5b.2	For guidance only: suggested <b>maximum</b> number pitches per year requiring private sites
5b.3	For guidance only: suggested <b>maximum</b> number pitches per year requiring local authority/RSL sites
5b.4	For guidance only: suggested <b>minimum</b> number pitches per year requiring private sites
	<b>5c : future need long term 2016 to 2021</b>
5c.1	For guidance only: suggested number pitches per year requiring local authority/RSL sites
5c.2	For guidance only: suggested number pitches per year requiring private sites

Please see Appendix 2 for more detail

**(B) Transit site pitch assessment: Gypsies and Travellers****Stage numbers in methodology****Stage 1**

	<b>Step 1a : Supply (statutory and local caravan counts)</b>
T1a.1	Existing transit sites provided by Las or RSLs : caravan counts
T1a.2	Existing transit sites provided by Las or RSLs : Figures provided by local authorities directly
	<b>Step 1b : Current need (KL&amp;WN survey and caravan count based)</b>
T1b.1	Proportion of current population who would require transit sites for 'events' (caravans)
T1b.2	Conversion to number of pitches (transit) : current need
	<b>Step 1c : Current need (roadside encampments)</b>
T1c.1	Average number of roadside encampments over previous year (caravans)
T1c.2	Average number of roadside encampments over previous year (pitch equivalent)

**Stage 2**

	<b>Step 2 : Comparison figures</b>
T2.1	Comparator : EERA estimates 2008 (pitches)
T2.2	Pitches based on proportion of 2:1 permanent : transit from 2005 survey

**Stage 3**

	<b>Step 3 : Final net annual need for transit pitches and caravans</b>
T3.1	Adjusted need after comparison of transit need estimates (Caravans)
T3.2	Adjusted need after comparison of transit need estimates (Pitches)
T3.3	<b>Net annual need for transit (caravans) 2012 to 2016</b>
T3.4	<b>For information: Net annual need for transit (pitches) 2012 to 2016</b>
T3.5	<b>Net annual need for transit (caravans) 2016 to 2021</b>
T3.6	<b>For information: Net annual need for transit (pitches) 2016 to 2021</b>

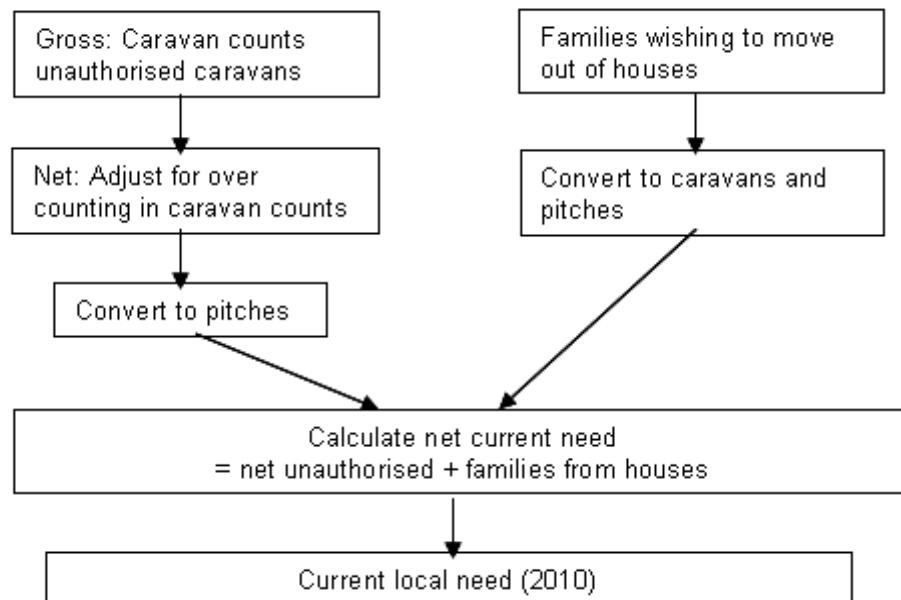
Please see Appendix 2 for more detail

### (C) Travelling Showpeople pitch assessment

The Travelling Showpeople pitch assessment methodology follows the same steps as the permanent pitch methodology (see section A). However specific steps are not appropriate to use for Travelling Showpeople and have therefore been omitted from the detailed methodology, as set out in Appendix 3.

The flowcharts and tables below highlight the stages used and applicable to Travelling Showpeople. To aid comparison, the step numbers have been kept the same throughout, as per the permanent assessment, where a stage has been omitted the numbering will not therefore be consecutive. Where stages are omitted this is clearly annotated, with a brief reason for the omission.

#### Stage 1: Assess current local need

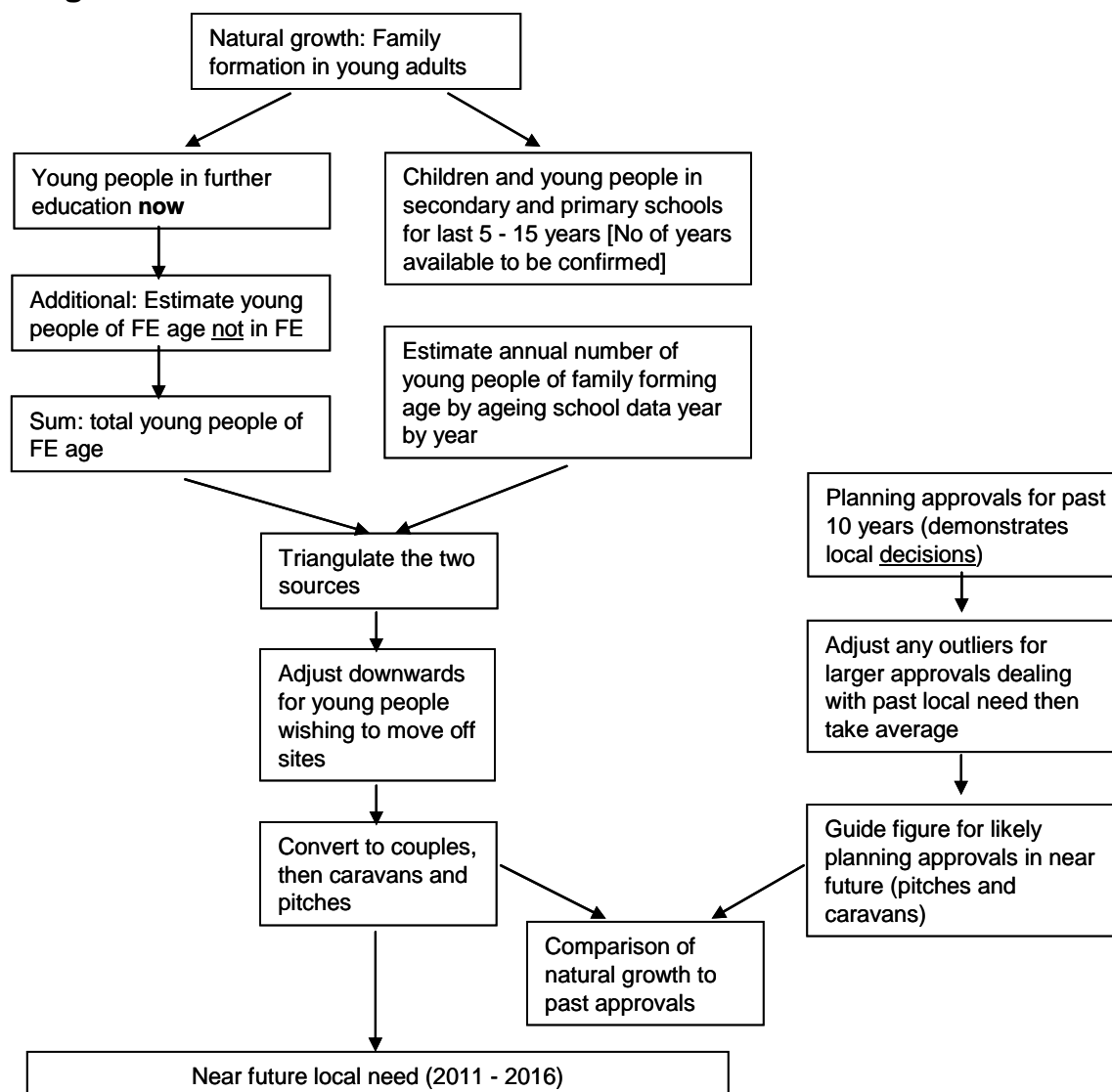


#### Stage numbers in methodology

		✓ if step not applicable	Reasons why not applicable
	<b>Step 1a : Current need (backlog : local data)</b>		
1a.1	Supply: <b>local data</b> on number of caravans or pitches excluding unauthorised not tolerated.		
1a.2	Base: <b>local data</b> on number of unauthorised caravans or pitches.		
1a.3	Adjustment of unauthorised caravan counts for local need only	✓	Caravan counts are not used
1a.4	Net need : average unauthorised caravans (local need)	✓	Caravan counts are not used
1a.5	Conversion to number of pitches		

		✓ if step not applicable	Reasons why not applicable
	<b>Step 1b : Current need (backlog : people based) in addition to caravans</b>		
1b.1	Travelling Showpeople families based on caravan counts (base for number wanting to move into houses and freeing pitches)		
1b.2	Travelling Showpeople families expressing an interest in moving off sites into houses	✓	No separate record of Travelling Showpeople families identified on Housing Registers
1b.3	Traveller families likely to move off sites into houses	✓	Omitting Travelling Showpeople wishing to move into houses as this would not improve the accuracy of the figures in Cambridgeshire
1b.4	Traveller families wishing to move out of houses onto sites (gross figure)	✓	No separate record of Travelling Showpeople families wishing to move from houses onto sites are kept
1b.5	Adjustment for Travelling Showpeople only registering once a pitch becomes available	✓	Omitting Travelling Showpeople wishing to move from houses onto pitches as this would not improve the accuracy of the figures in Cambridgeshire
1b.6	Net figure Traveller families wishing to move from <b>houses to sites</b>	✓	Omitting Travelling Showpeople houses to pitches moves as this would not improve the accuracy of the figures in Cambridgeshire
1b.7	Net figure Traveller families wishing to move from <b>sites to houses</b>	✓	Omitting Travelling Showpeople houses to pitches moves as this would not improve the accuracy of the figures in Cambridgeshire
1b.7	Conversion to number of caravan	✓	Not Applicable
1b.8	Conversion to number of pitches	✓	Not Applicable
	<b>Step 1c : Current need calculation (backlog)</b>		
1c.1	Current need caravans		
1c.2	Current need pitches		
	Please see Appendix 3 for more detail		

## Stage 2: Asses near future local need: 2011to2016



## Stage numbers in methodology

		✓ if step not applicable	Reasons why not applicable
	<b>Step 2a : 2011 to 2016 family, pitch and caravan calculation</b>		
2a.1	Young people of 'family forming age' Annual		
2a.2	Additional multiplier for South Cambridgeshire and City (to apportion TES figures)	(✓)	May not be applicable to Travelling Showpeople (depends on the numbers of Travelling Showpeople shown in data from City and South Cambridgeshire)
2a.3	Number of potential couples		
2a.4	Family formation per year		

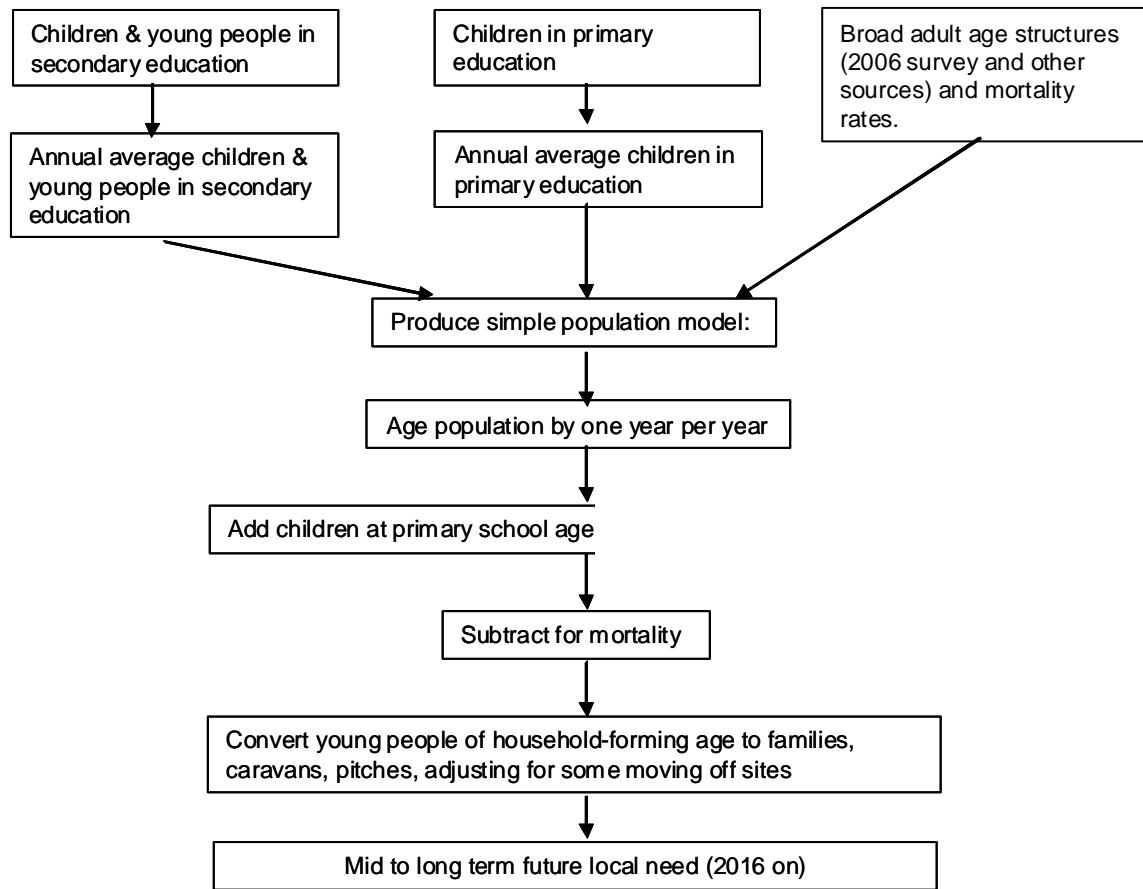
		✓ if step not applicable	Reasons why not applicable
	: calculation on young people of family forming age (Important : see notes)		
2a.5	Adjustment for number of newly forming families wishing to move into houses		
2a.6	Newly forming households (family formation per year wanting a pitch)		
2a.7	Conversion to number of caravan (family formation) annual		
2a.8	Conversion to number of pitches (family formation) annual		

All remaining steps in Step 2 are applicable fro Travelling Showpeople:

	<b>Step 2b : families returning to local authority area with a 'local connection'</b>
2b.1	Returning families with a 'local connection' : annual number of caravans
2b.2	For information: Conversion to number of families (local connection) : annual
2b.3	Conversion to number of pitches (local connection) : annual
2b.4	Number of caravans (local connection) : annual 2011 to 2016
2b.5	Number of pitches (local connection) : annual 2011 to 2016
	<b>Step 2c : Future need per year 2011 to 2016</b>
2c.1	Near future need caravans : annual 2011 to 2016
2c.2	Near future need pitches : annual 2011 to 2016
	<b>Step 2d : comparison figures natural growth (above) to past planning approvals</b>
2d.1	Existing temporary permissions (pitches)
2d.2	Temporary permissions : proportion need converting to permanent per year (pitches)
2d.3	Permanent planning permissions granted per year (pitches)
2d.4	Permanent planning permissions granted per year : adjusted for outliers (pitches)

Please see Appendix 3 for more detail

### Stage 3: Assess mid and longer term future local need (2016 to 2021)



All steps in Step 3 are applicable to Travelling Showpeople

### Stage numbers in methodology

	<b>Step 3a : newly forming households</b>
3a.1	Young people of 'family forming age' Annual
3a.2	Additional multiplier for South Cambridgeshire and City (to apportion TES figures)
3a.3	Number of potential couples
3a.4	Family formation per year : adjust for a small number of young people of family forming age not forming a family
3a.5	Adjustment for number of newly forming families wishing to move into houses
3a.6	Newly forming households (family formation per year wanting a pitch)
3a.7	Conversion to number of caravan (family formation) annual
3a.8	Conversion to number of pitches (family formation) annual
	<b>Step 3b : families returning to local authority area with a 'local connection'</b>
3b.1	Returning families with a 'local connection' : annual number of caravans
3b.2	For information: Conversion to number of families (local connection) annual
3b.3	Conversion to number of pitches (local connection) annual
3b.4	Number of caravans (local connection) : annual 2016 to 2021
3b.5	Number of pitches (local connection) : annual 2016 to 2021

Please see Appendix 3 for more detail

## Stage 4: Pitches per year for Travelling Showpeople

All steps in Step 4 are applicable to Travelling Showpeople

### Stage numbers in methodology

<b>Step 4a : Pitches per year 2011 to 2016</b>	
4a.1	Base : current need 2010
4a.2	Adjustment : current backlog dealt with over time
4a.3	Average annual provision to meet current backlog need over agreed period
4a.4	Annual need 2011 to 2016 (newly forming households and returning Travelling Showpeople with local connection)
4a.5	<b>Total Annual Need 2011 to 2016</b>
<b>Step 4b : Pitches per year 2016 to 2021</b>	
4b.1	Future need 2016 to 2021 (newly forming households)
4b.2	Future need 2016 to 2021 (returning families with a 'local connection')
4b.3	<b>Long term need per year</b>

Please see Appendix 3 for more detail

## Stage 5: Tenure split: pitches for Travelling Showpeople

The whole of Stage 5, tenure split : pitches, is not applicable for Travelling Showpeople as there is insufficient local data to make a meaningful assessment, largely because of the small numbers living in most local authority areas.

## Transit site pitch assessment for Travelling Showpeople

Transit pitches for small numbers of Travelling Showpeople caravans should be covered within the provision as assessed for Gypsies and Travellers above as that is based on actual numbers of roadside encampments. Transit pitches for large numbers of Travelling Showpeople caravans cannot be planned for in this way as it is not economically possible to provide very large transit sites. Provision for large numbers of Travelling Showpeople needs to be dealt with through other approaches rather than by planning.

### ***List of abbreviations***

CLG	Communities and Local Government (department of)
EERA	East of England Regional Assembly, now known as the East of England Local Government Assembly
GTANA	Gypsy and Traveller Accommodation Needs Assessment
KL&WN	King's Lynn and West Norfolk Borough Council
KS3	Key Stage 3 (children aged 11 to 14)
KS4	Keys Stage 4 (young people aged 14 to 16)
LA	Local authority
RSL	Registered Social Landlord
SHMA	Strategic Housing Market Assessment
TES	Travellers Education Service
TLO	Travellers Liaison Officer