

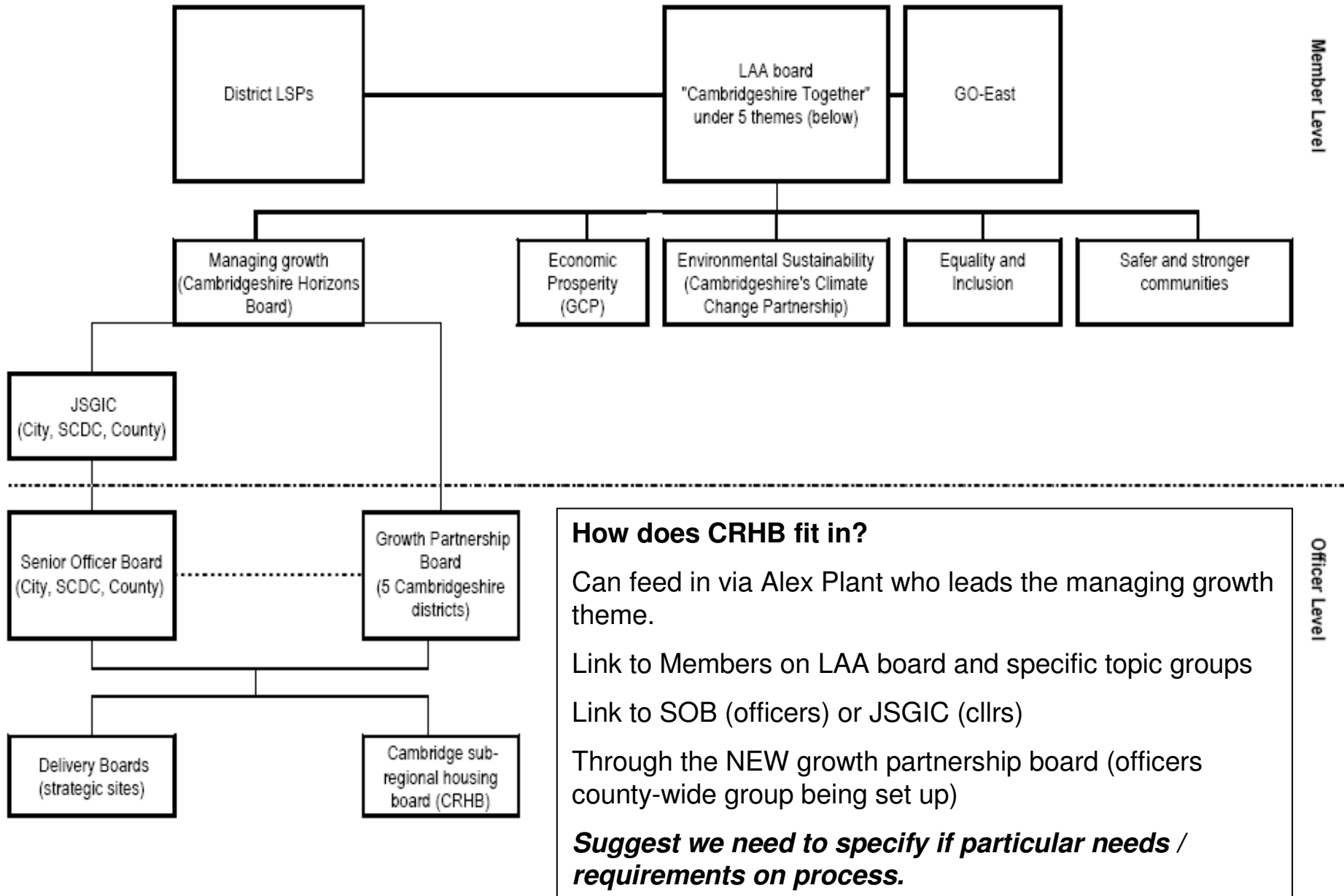
Where Do We Fit in?

Some wiring diagrams for CRHB

Over-engineered?

- Vast array of consultations, new approaches and groups being set up.
- To help CRHB want to run through some of them, seeking CRHB's feedback on where and how we fit and where we need to build stronger relationships.
- Main ones for today are LAAs, JSNAs, RES and RSS, IDPs and the “single conversation”.
- Let me know if you need others investigated!

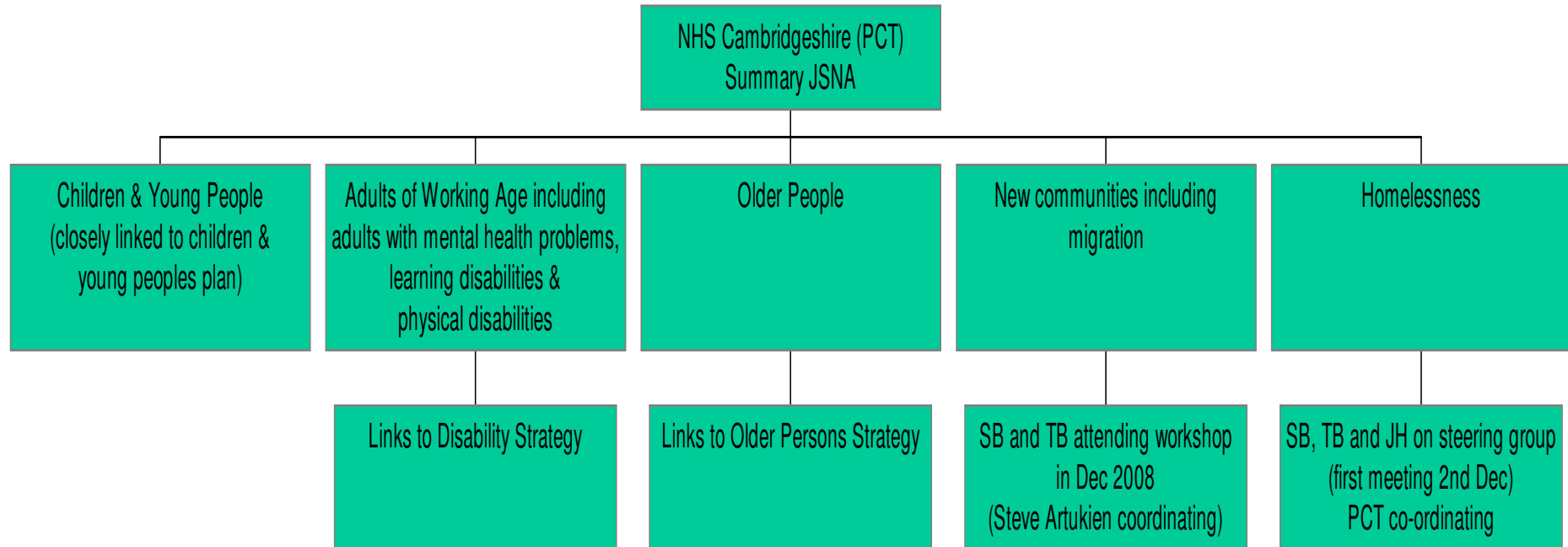
LAAs (Cambridgeshire)



Joint Strategic Needs Assessments

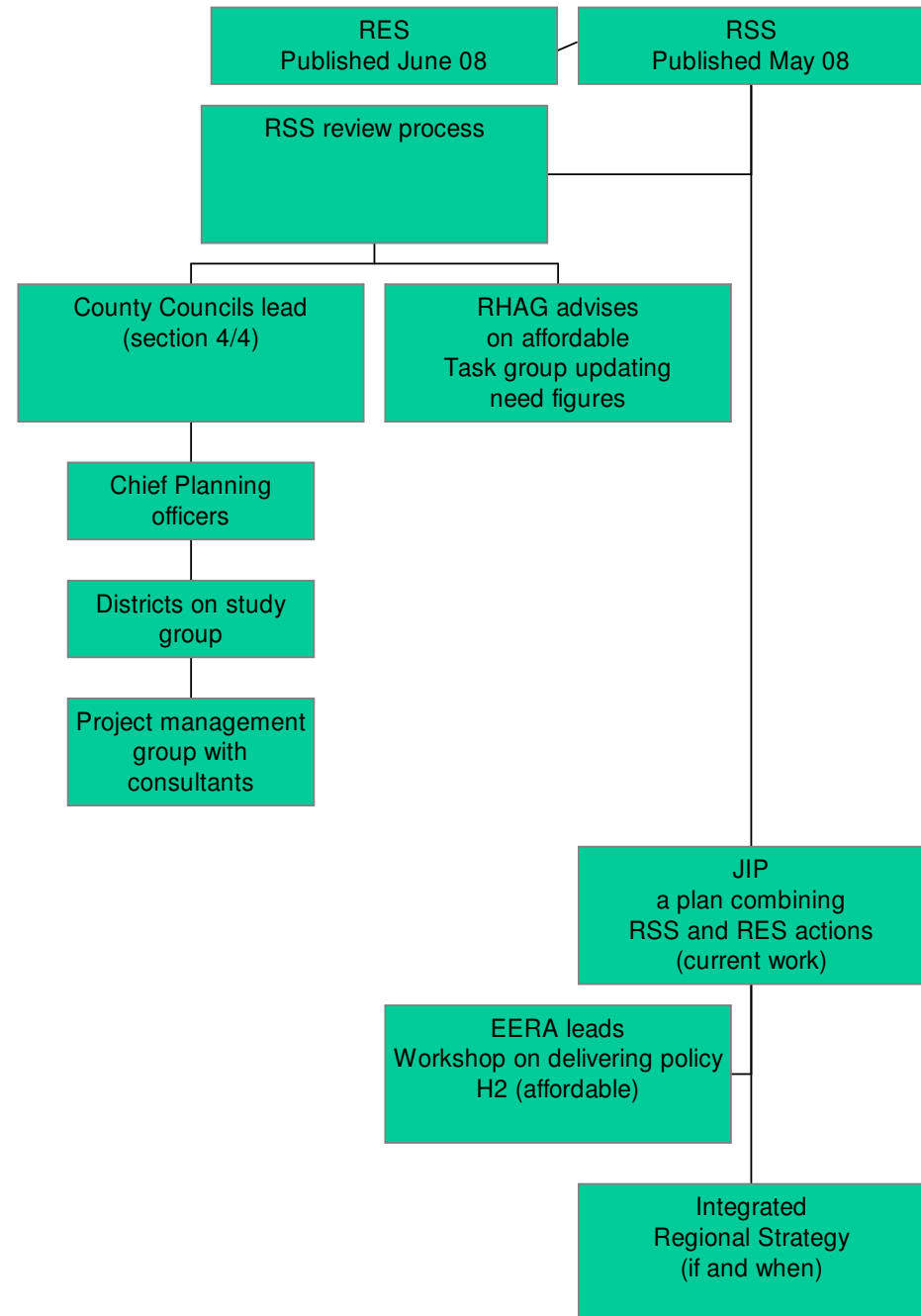
- Required by the Local Government and Public Involvement in Health Act (2007) from upper-tier local authorities and PCTs.
- Aim is to:
 - identify current and future health and well-being needs of a local population
 - inform policies and priorities set in LAAs
 - lead to agreed commissioning priorities, to improve outcomes and reduce health inequalities.
- Phase 1 is a summary of needs assessment work carried out jointly over the past year by NHS Cambridgeshire and Cambridgeshire County Council. The Joint Strategic Needs Assessment is built up from separate strands of work (see next slide)
- More detail will be available on this website:
<http://www.cambridgeshirepct.nhs.uk/default.asp?id=656>
- Phase 2 is a summary of the consultation carried out on individual JSNA strands.

JSNAs



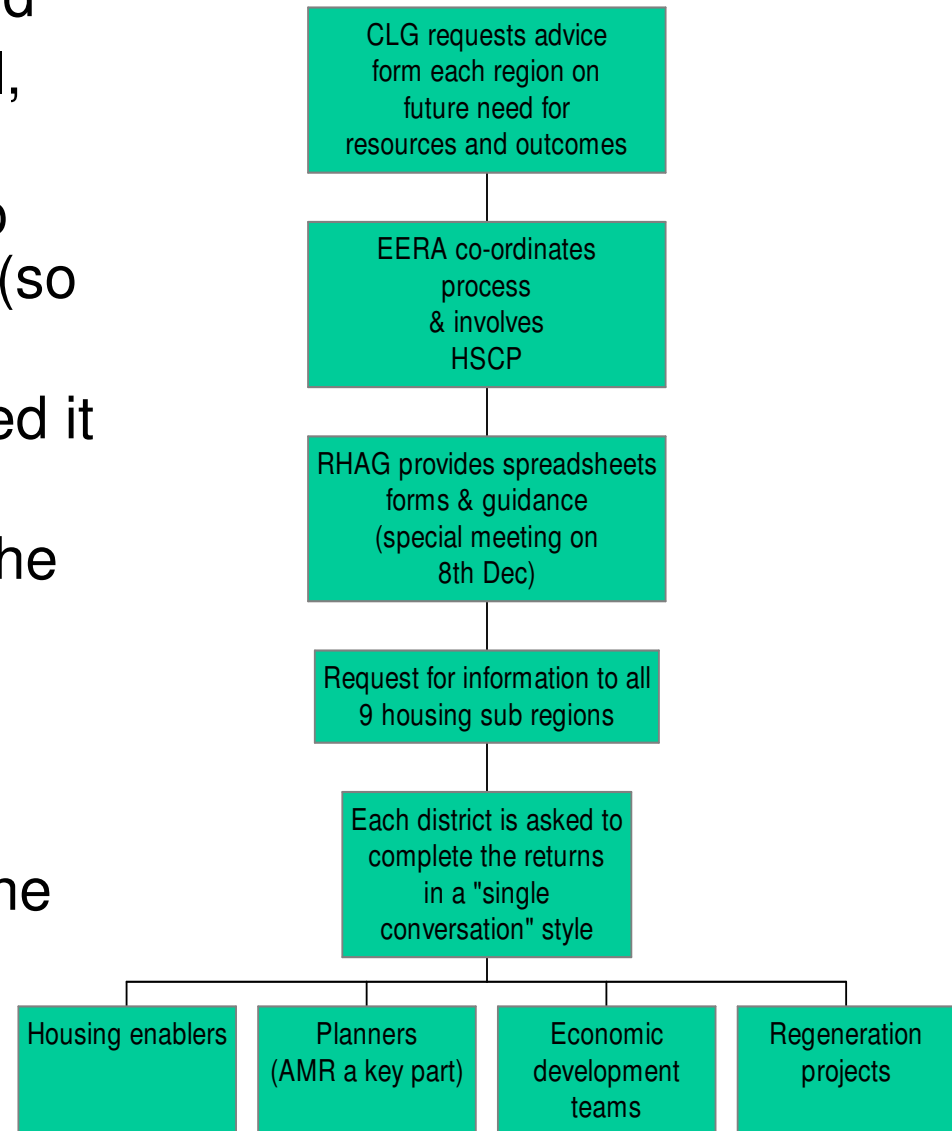
RSS and RES

- Long term plan to integrate the spatial and economic strategies.
- Before the IRS arrives, EERA and EEDA are working to create a Joint Implementation Plan.
- At the same time, the RSS itself is being reviewed to extend its end date from 2021 to 2031.



Regional Funding Advice

- Process very quick turnaround
- Districts have responded well, overall
- City, SCDC and FH unable to complete AMR sections fully (so far)
- Others seem to have managed it somehow
- Well done to all for initiating the conversations needed with planners and others, for a complete return
- RHAG meeting on Monday considers outcomes across the Region



Integrated Development Programmes

- A guide to IDPs is available at http://www.eeda.org.uk/files/IDP_low_res_final_document.pdf
- Horizons has a wealth of information already (including SHMA, LTDP, green infrastructure strategy, faith facilities study etc etc)
- Districts will be fully involved – process being set up
- Will be setting up a stakeholder workshop in Jan 09
- EEDA has initiated, GCP and Horizons helping start up the process for our area.

Mike Crouch, Executive Director, Regional Cities East, comments....

“The development of IDPs by our RCE partnerships has been an incredibly valuable experience.

Until now, there has been a clear gap and lack of alignment in the planning processes involved in delivering growth. IDPs are remedying this.

They provide a single delivery plan which looks at all infrastructure requirements, provides clear evidence to justify their need and, crucially, sets out which are the most important.

It may seem blindingly obvious but prior to establishing the IDPs this simply hasn't been done properly in our region or elsewhere.

IDPs have made us look again at what really matters. They have prompted excellent cross boundary working and a better understanding of where scarce resources can be focused to the benefit of the totality of a sub-region.

They have made us think about the timing of interventions and the importance of recognising the interdependence of key aspects of growth. I think they have also made us much more realistic about what can be delivered within available capacity.”

The Single Conversation....?

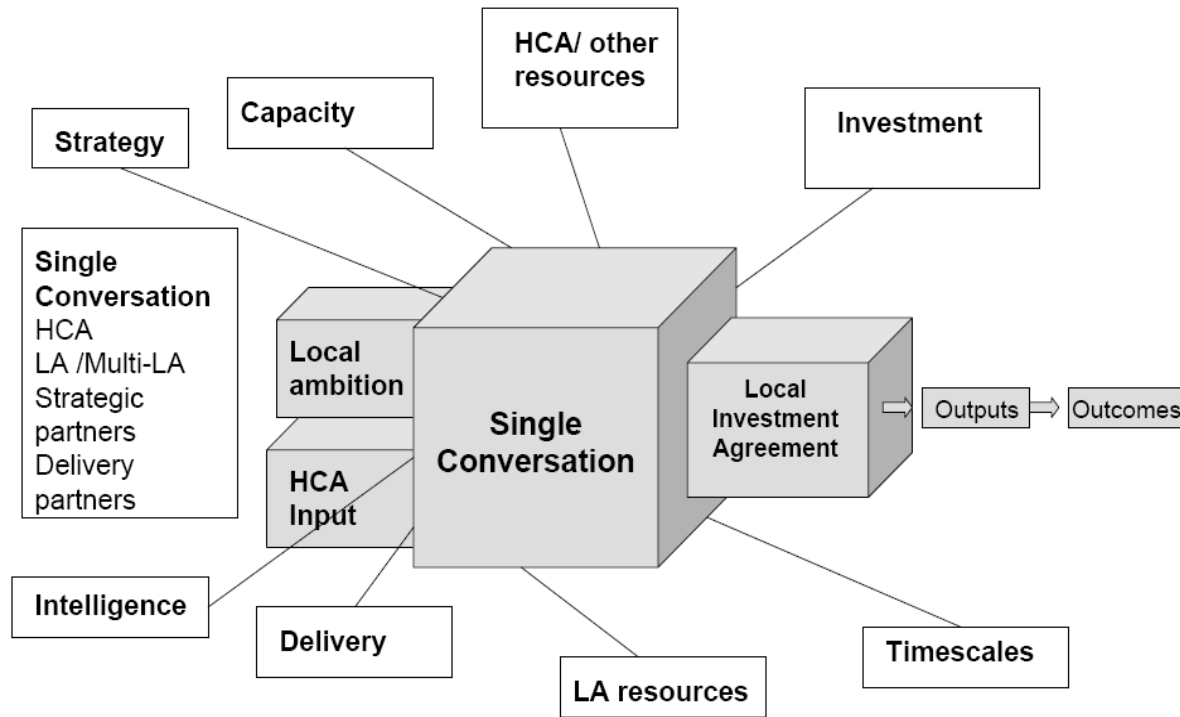
The single conversation aims to...

- agree and secure delivery at local level (supporting national objectives)
- build relationships between all partners to achieve housing growth and renewal
- set up a system where the new HCA holds these conversations, rather than the current range of agencies and departments

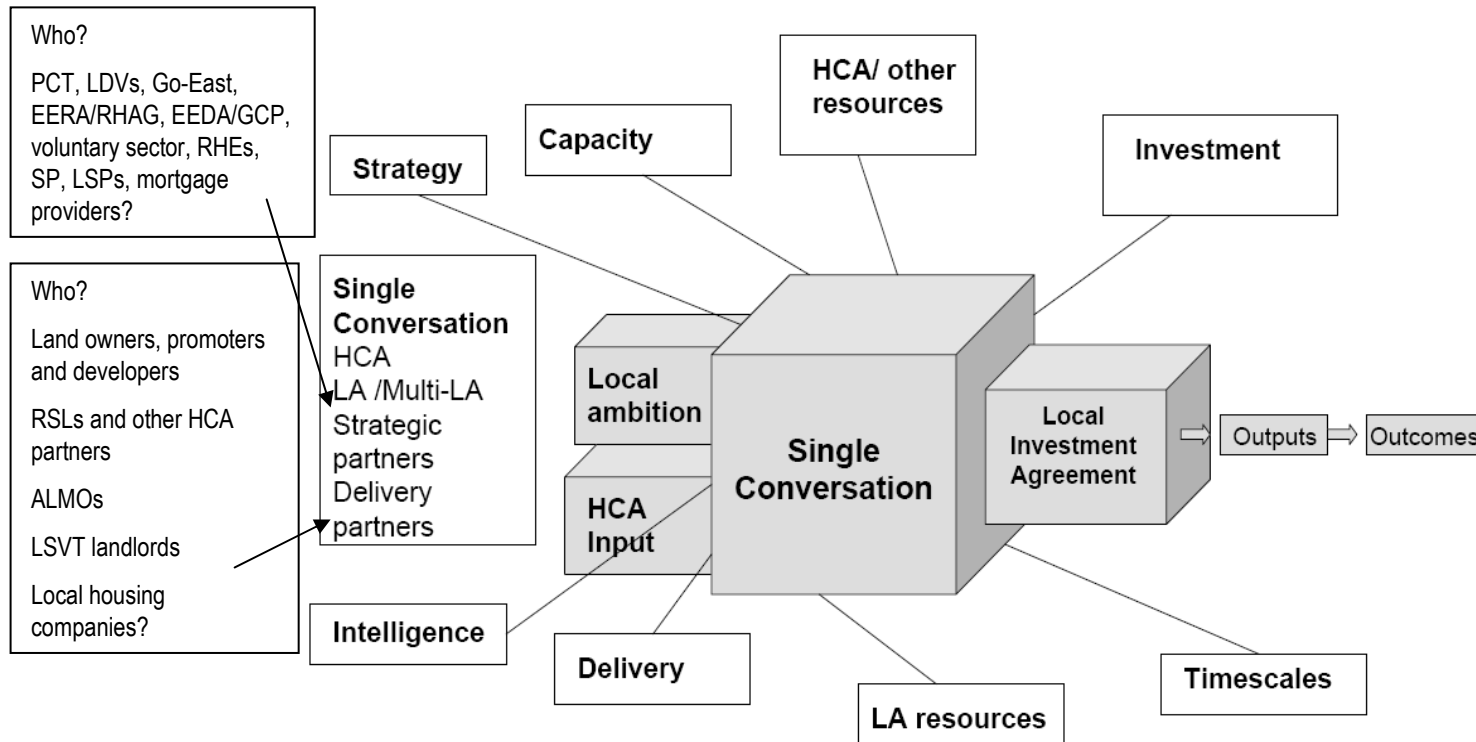
Our state of play:

- Protocol between CRHB and HC already set up
- Good track record of sub regional working
- CRHB has volunteered to pilot the single conversation – thought it might help to take a closer look at the 3-D diagram John presented at our last meeting

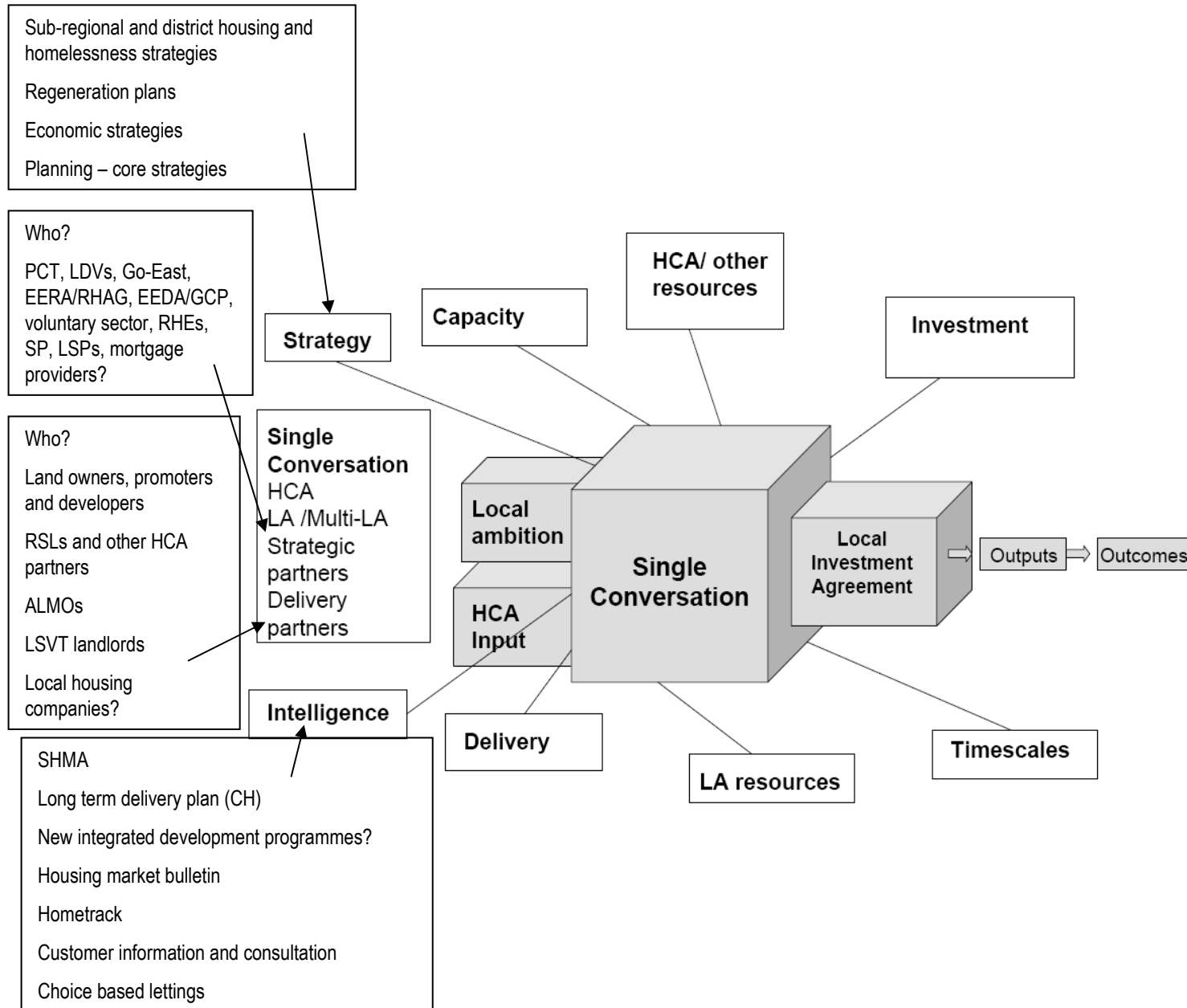
The Single Conversation....?



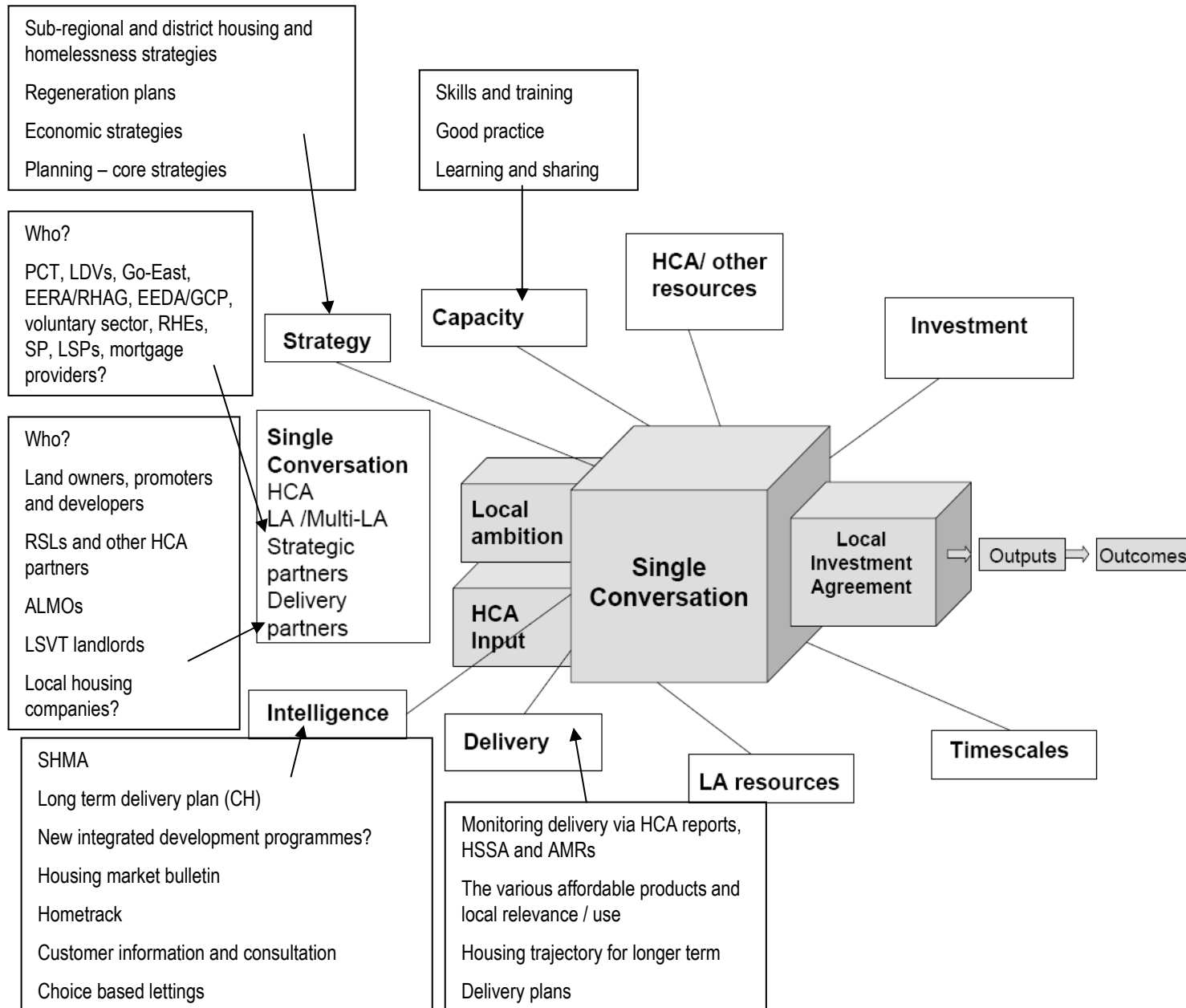
The Single Conversation....?



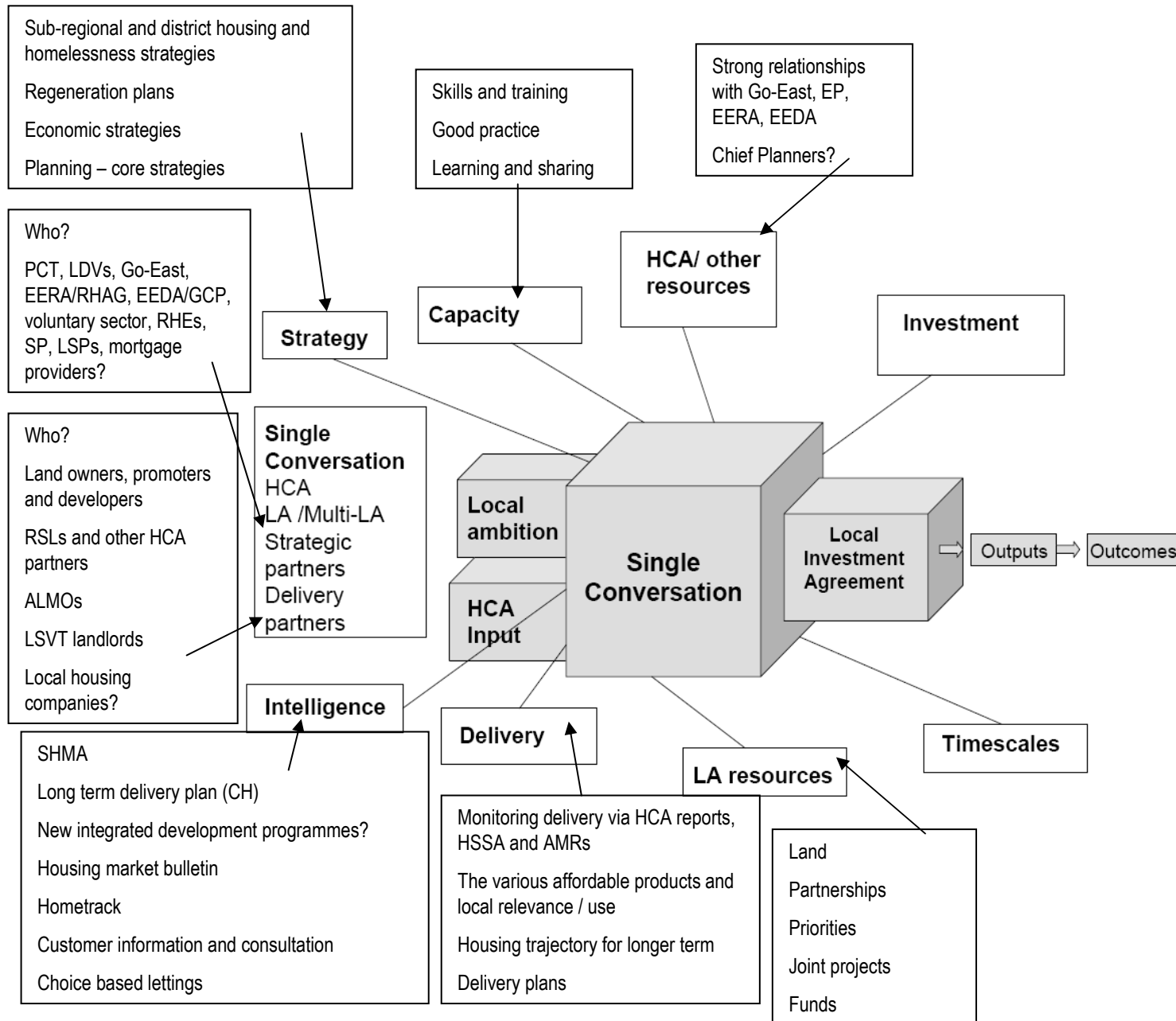
The Single Conversation....?



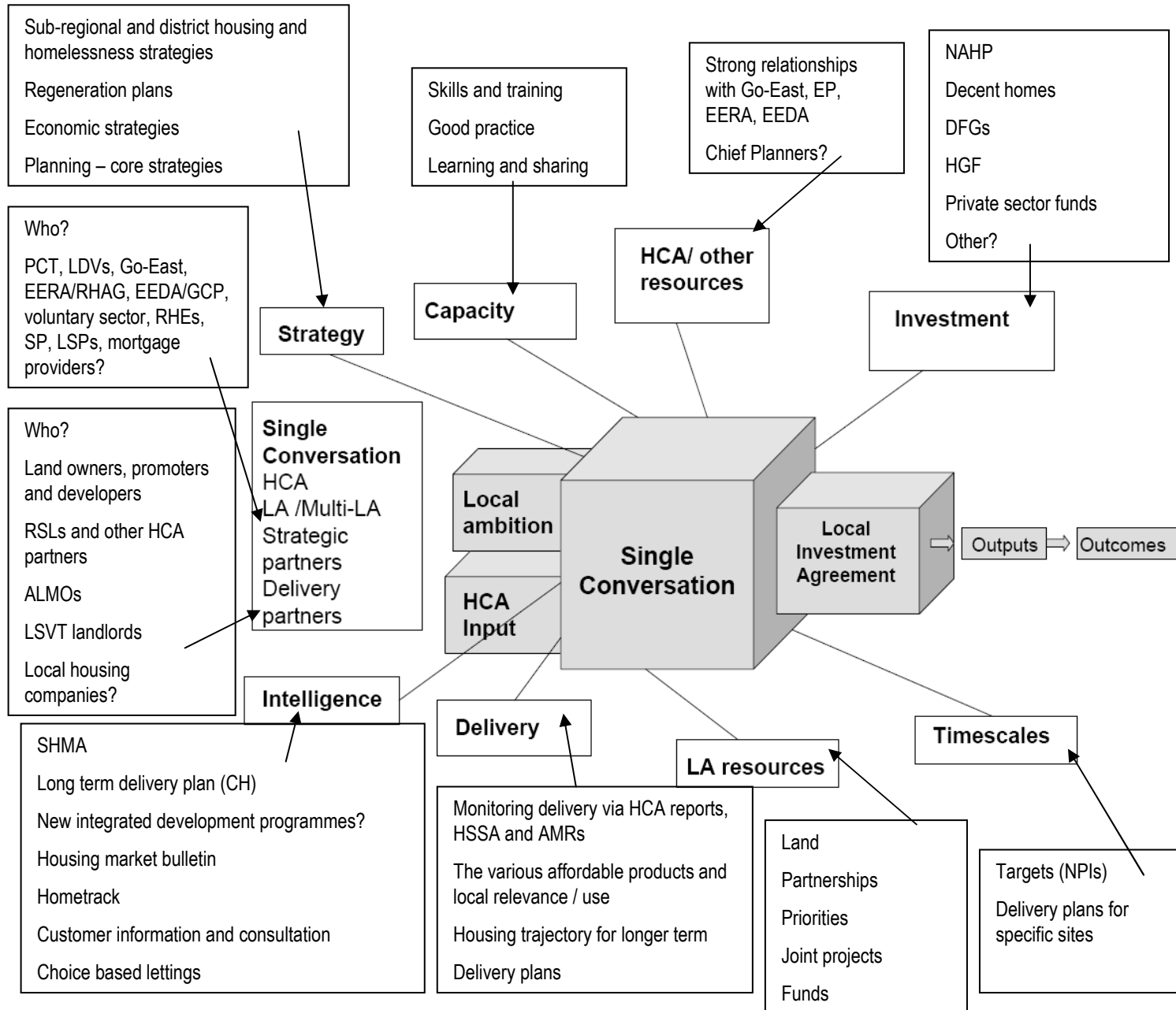
The Single Conversation....?



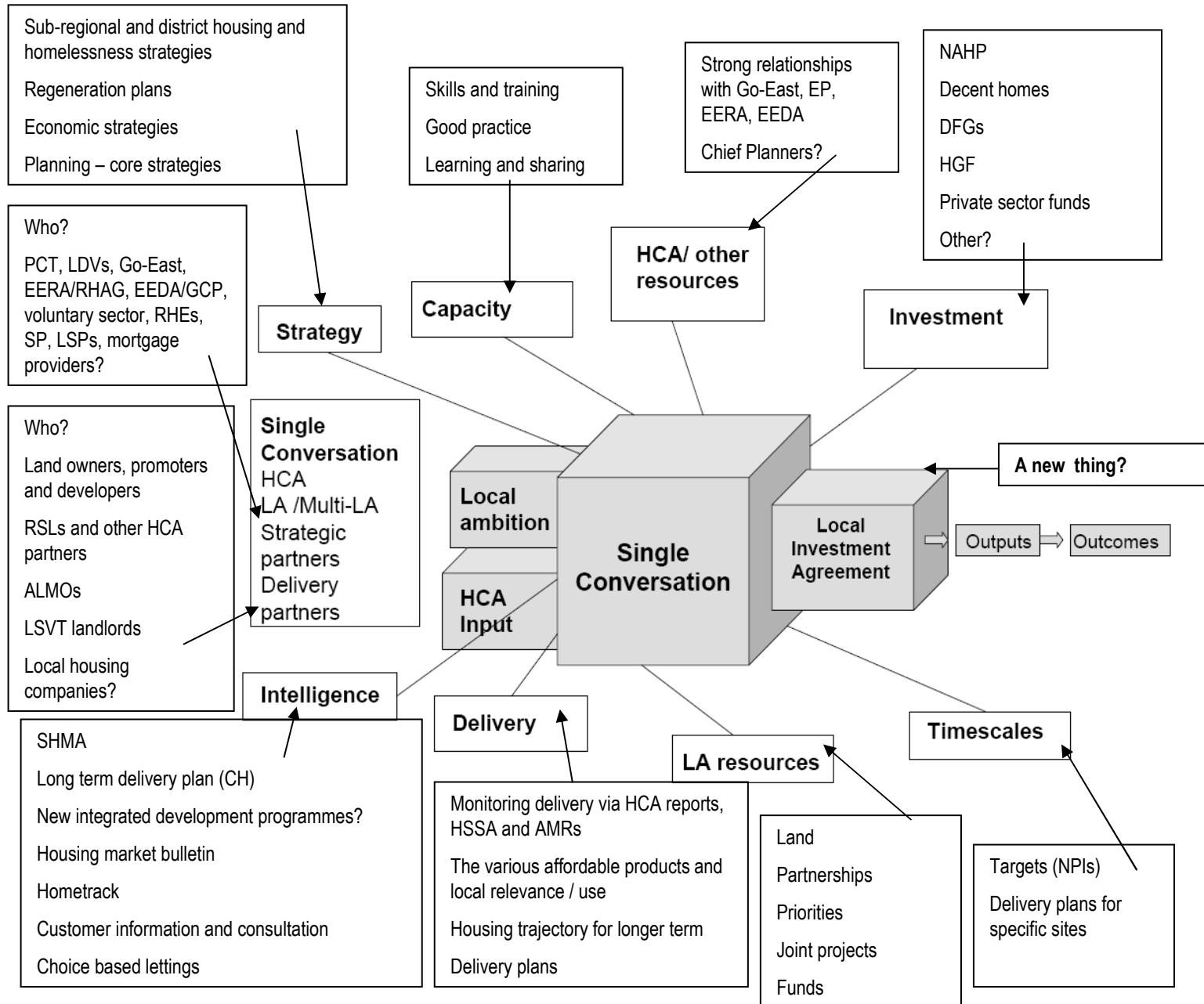
The Single Conversation....?



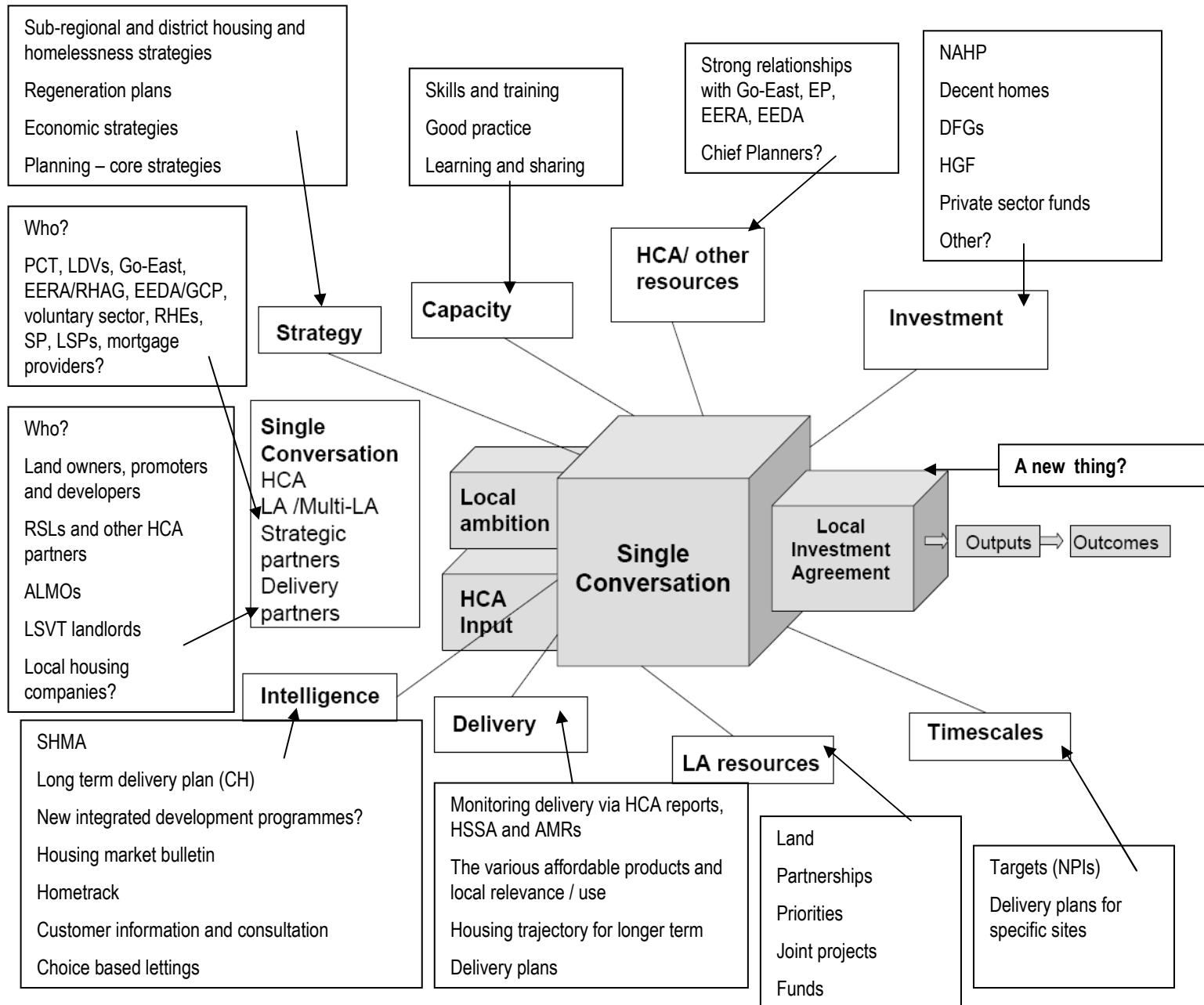
The Single Conversation....?



The Single Conversation....?



The Single Conversation....?



Questions?

Thoughts?

Observations?

Overload?